

INSTALLATION INSTRUCTIONS FOR CLICK RIGID CORE FLOORING

Tools and materials required

- Safety glasses
- Measuring tape
- Spacers
- Utility knife
- Straight edge
- Rubber mallet
- Electric saw

Text

Please read this instruction carefully before installation.

Suitable substrates

Rigid core flooring can be installed on most existing floors, wooden, PVC and concrete floors. All carpeting and padding need to be removed. Make sure that the surface is clean, dry and level within 3/16" in 10 ft. (4.7 mm in 3 m). Supporting floors must be rigid as too much deflection can result in a failed installation.

Wooden substrates

Wood floors must be either 5/8" (16 mm) exterior grade tongue and groove plywood or 23/64" (9 mm) OSB, free from spring/deflection.

Concrete substrates

Rigid core flooring may be installed over on grade, above grade or below grade concrete subfloors. Concrete floors shall be constructed in accordance to local construction standards. Concrete shall have a minimum compressive strength of 3500 psi. Installation of a moisture vapor-barrier is recommended prior to pouring of on or below grade slabs. Moisture vapor transmission shall not exceed 3 lbs / 1000 sq ft / 24 hours per ASTM F-1869. Moisture may also be tested according to ASTM E 2170; when tested according to this method, the internal relative humidity shall not exceed 75%.

Existing floors

Rigid core flooring may be installed over most smooth, single layer, hard surface-existing flooring. Check flooring for any curled areas around the perimeter or at seams and repair if necessary. **Caution:** If you plan to remove old resilient flooring material or any type of old adhesive, please be aware that it may contain asbestos fibers or crystalline silica; therefore, avoid creating dust. Inhalation of such dust is a cancer and respiratory tract hazard and local regulations may require professional removal.

Substrate preparation

- All substrates must be dry, clean, smooth level, free from all existing adhesive residues, and free from movement or deflection.
- The substrate must be level within 3/16" in 10 ft. (4.7 mm in 3 m).
- Fill and level all plywood seams and concrete cracks, construction joints, control joints, depressions, grooves or other irregularities using appropriate materials.
- Sweep and/or vacuum substrate to remove all dust debris.

Prior to installation

- Carefully check flooring material for any defects. Contact your supplier immediately if any defect is found.
- Inspect all planks for visible defects and damage before and during installation. Do not install damaged planks. The manufacturer will not accept responsibility for claims on flooring installed with obvious defects. During installation, inspect the groove area and remove any debris that may prevent proper assembly of planks.
- Room temperature shall be no less than 65 °F for 24 hours before, during and after installation.
- Remove all existing moldings.
- Undercut doorway moldings to the thickness of the flooring.
- **Rigid core flooring is not recommended to be installed under large windows where the flooring is exposed to intense direct sunlight.**
- Cartons must be stored horizontally at all times.
- Protect carton corners from damage.
- This Rigid core flooring is a floating floor and should not be glued or nailed to the substrate.
- Rigid core flooring is intended for indoor use only.
- Determine in which direction the planks will be installed. To make the room appear larger or if installing in very small rooms or hallways, it is preferable to lay the planks parallel to the longest room dimensions.
- Do not install cabinets on planks.
- Carefully measure the room to determine squareness and also to determine the width of the last row of planks (is less than 2" (50 mm), excluding the tongue, the width of the first row of planks will have to be cut accordingly.
- A minimum 5/16" (8 mm) expansion space is required around the perimeter of the room and all vertical objects.
- Ensure that all boxes are of the same product and mix planks from different boxes for best results.

Installation

THIS PRODUCT NEEDS ROOM TO EXPAND AND CONTRACT. AT NO POINT SHOULD YOU ATTACH THE FLOOR TO ANY VERTICAL SURFACE.

1. Begin laying planks from the left side of the starting wall and work to the right side. The tongue side of the plank shall face the starting wall.
2. Place 5/16" (8 mm) spacers between the short / long side of the planks and the wall. Always position one spacer between the wall and where the planks join.
3. This rigid core flooring is with drop-click on short edges. You must always leave the groove side of the short edge exposed for the next plank to be dropped into place. You can not reverse the installation and must continue to start from the same side. Install one plank at a time, always leaving the exposed groove profile exposed to the end joint.
4. Installation the first row of the plank: Lining the second plank with first plank by push slightly toward and down on short edge. (See figure 1 & 2). The plank should drop into place with little resistance. DO NOT FORCE THE PLANK DOWN, as this may damage the profile. If the plank will not drop, check the locking profile for debris or damage and re-try. Please make sure that the planks are perfectly aligned. Install remaining full planks in the first row.
5. The last plank in the first row will need to be cut. Measure the distance between the wall and the surface of the last full plank. Subtract 5/16" (8 mm) from this measurement to allow for the spacer. If this measurement is less than 8" (20 cm), the length of the first plank in the row must be cut. The first and last planks in each row must be at least 8" (20 cm) in length. Planks are cut using a sharp utility knife and a square.
6. The remaining piece cut off from the last plank in the first row may serve as the first plank in the second row provided it is at least 8" (20 cm) long. Always stagger end joints from row to row a minimum of 8" (20 cm) apart.
7. Install the long side of the first plank of the second row. Remember to place a 5/16" (8 mm) space between side of wall and the short side of the plank. Insert the tongue side into the groove side of the previous row at a low angle and lower flat to the substrate. (See Figure 3)
8. Attach the second panel of the new row first on the long side. Tilt and slide this panel as close as possible to the previous row and then drop the profile into the lower panel groove. (See Figure 4, 5 & 6)
9. Using rubber mallet gently tap the upper panel to make sure the clicks are positioned fully. (See Figure 6)
10. Continue installing remaining planks in second row. It is important to make sure that the first two rows are straight and square as they can affect the entire installation.
11. Continue working from left to right, row by row. Be sure to maintain a 5/16" (8 mm) space around all walls and vertical objects and maintain a random appearance. Remember to offset end joints a minimum of 8" (20cm).

Finishing the installation

- After all planks have been installed, remove spacers from perimeter of room.
- Install transition moldings. **Do not fasten any moldings through the flooring.**
- Pre-drill and install quarter round or baseboard molding. Molding must be sufficient size to cover the 5/16" (8 mm) space and **must be fastened to the wall, not to the flooring.**
- Use furniture moving pad to cover the top of the flooring when moving heavy furniture or appliances into position.
- Use proper floor protectors under the legs of furniture.
- Post installation temperature must be maintained between 65° F and 100 ° F. Relative humidity must be maintained between 40% and 70%.

Maintenance

Please follow the recommendations in this guide to retain the fresh look and protect the finish. After installing the floor, we recommend a first cleaning to remove and loose dirt or debris that may have been introduced during the installation process. Also, in order to protect the flooring surface from abrasive dirt and debris we recommend installing an effective barrier system to limit the amount of moisture, dirt, and grit that may enter the flooring area. Please check any new cleaning agents on a small test patch of the floor in an inconspicuous area, and avoid using harsh cleaners or ammonia based cleaning products.

1. First, sweep and vacuum the floor surface to ensure removal of all loose dust, dirt, and debris. Using a mop scrub the flooring surface. Use warm, clean water, ring several times or as needed, the use a dry mop or wet vacuum to remove the water and allow to dry.
2. Do not allow pets with unclipped nails to damage your rigid core flooring. It may result in severe scratching to the surface, as well as any high heeled shoes that do not have proper tips on the heels.
3. Avoid exposure to direct sunlight for prolonged periods of time. During peak sunlight hours, use drapes or blinds to minimize the direct sunlight on the vinyl flooring. Most types of flooring will be affected by continuous strong sunlight. In addition, excessive temperatures are not good for resilient floors. Some natural ventilation or intermittent air conditioning in vacant homes should be considered. Long term continuous inside temperatures over 95°F combined with strong direct sunlight will damage the flooring and cause the installation to fail.
4. Do not wax your rigid core flooring. The surface of your floor is very dense and nonporous, which prevents wax from penetrating and thus builds up a bed for yellowing and dirt collection. The same non-porous feature also provides all the protection against wear and staining that you will need.
5. Do not use soap based detergents or abrasive cleaners. To avoid possible permanent indentation or damage, proper floor protection devices must be used under furniture and appliances. Exercise care when removing and replacing furniture or appliances.
6. If your floor has been exposed to excessive amounts of water due to flooding, simply remove the water as quickly as possible using a water pump, fans and a dehumidifier. A dehumidifier should be promptly turned on in the room to reduce the moisture levels back to normal. Do not dry the room below the normal moisture level that existed previously.

25-YEAR RESIDENTIAL LIMITED WARRANTY

For residential installations, Rohmex warrants that our rigid core flooring products will be free from manufacturing defects for 25 years from the date of purchase.

This warranty applies only to the first owner and the first installation for the product and may not be transferred. The "first owner" is the person stated as the buyer on the Rohmex purchase document (Rohmex retail customers).

This product warranty only applies to defects inherent to the material supplied, that is, any material or production defects that are acknowledged by the manufacturer. The warranty covers the cost of the product only; installation and uninstallation costs are not covered.

This guarantee applies only to the original purchaser and proof of purchase is required for all claims. Claims for wear must show a minimum dime-size area.

This guarantee is pro-rated based on the amount of time the floor has been installed. A pro rata warranty is one that provides for a refund or credit that decreases according to a set of formula as the warranty period progresses. Rohmex original warranty value is reduced by the amount of time that you own it.

Exclusions

- The following are not covered by this warranty:
- Darker, solid colors naturally show more scratches and dirt and require more maintenance. We cannot warrant the product against these normal occurrences.
 - We will not accept shading claims for an overall white floor with touching white planks or tiles.
 - Damage caused by fire or flood; moisture intrusion caused by emissions from subfloor; intentional abuse; damage caused by vacuum cleaner beater bar; indentations or damage caused by improper rolling loads, chairs, or other furniture not using proper floor protectors or caster wheels; cutting from sharp objects; asphalt staining and staining from rubber mats; surface scratches; changes in color or sheen appearance when exposed to a natural light source; exterior application or loss due to inconvenience, loss of time, incidental expenses, or consequential damages.
 - Minor shading, color, or texture differences between samples and delivered product.
 - Construction or installation-related damage.
 - Floors damaged by excessive moisture from sources such as flooding and water leakage.
 - Installation defects and installations not using the recommended products.
 - Damage caused by abuse such as moving appliances across the floor without adequate protection
 - When moving appliances or heavy furniture, lay a furniture moving pad on your floor and "walk" the item across it. This protects your floor from scuffing and tears.

If, prior to installation, Rohmex floors are not acclimated to room temperature (between 65°F and 100°F) at job site between 24 and 48 hours, and, if, post-installation, Rohmex floors are not continuously maintained at such temperature, damage incurred may not be covered by your warranty.

Rohmex excludes and will not pay incidental or consequential damages under this warranty. By this we mean any loss, expense, or damage other than to the flooring itself that may result from a defect in the flooring. No implied warranties extend beyond the terms of this written warranty.

This product warranty only applies to defects inherent to the material supplied, that is, any material or production defects that are acknowledged by the manufacturer. The warranty covers the cost of the product to the retailer only; installation and uninstallation costs are not covered.

Figure 1

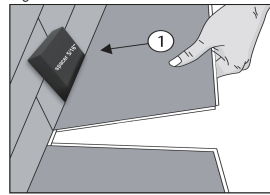


Figure 2

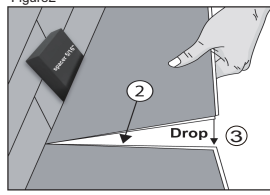


Figure 3

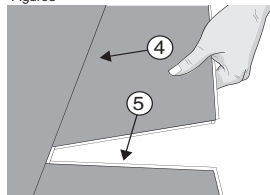


Figure 4

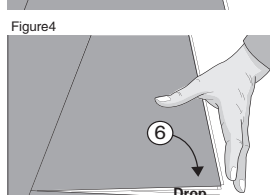


Figure 5



Figure 6

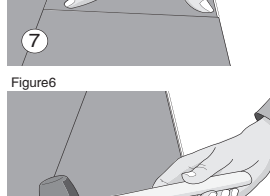


Figure 7

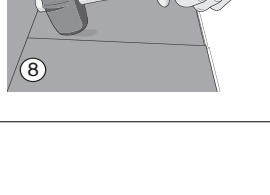


Figure 8

